

MONTHLY MEMBERSHIP PROGRESS REPORT

District 318 E

Results as of: 6/30/2020

GMT:

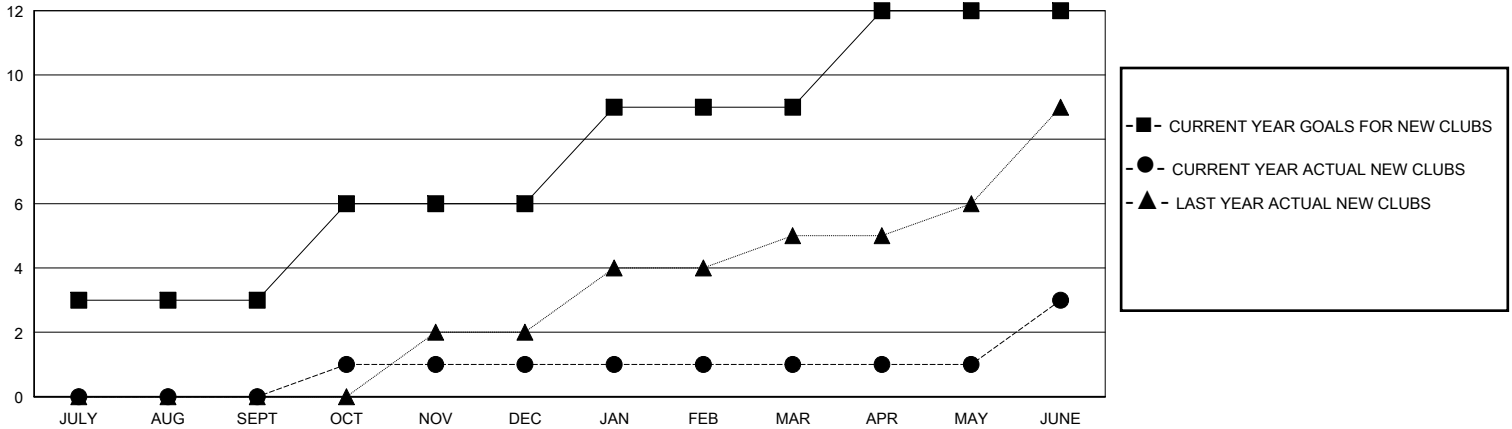
LOCATION INDIA

GMT CA

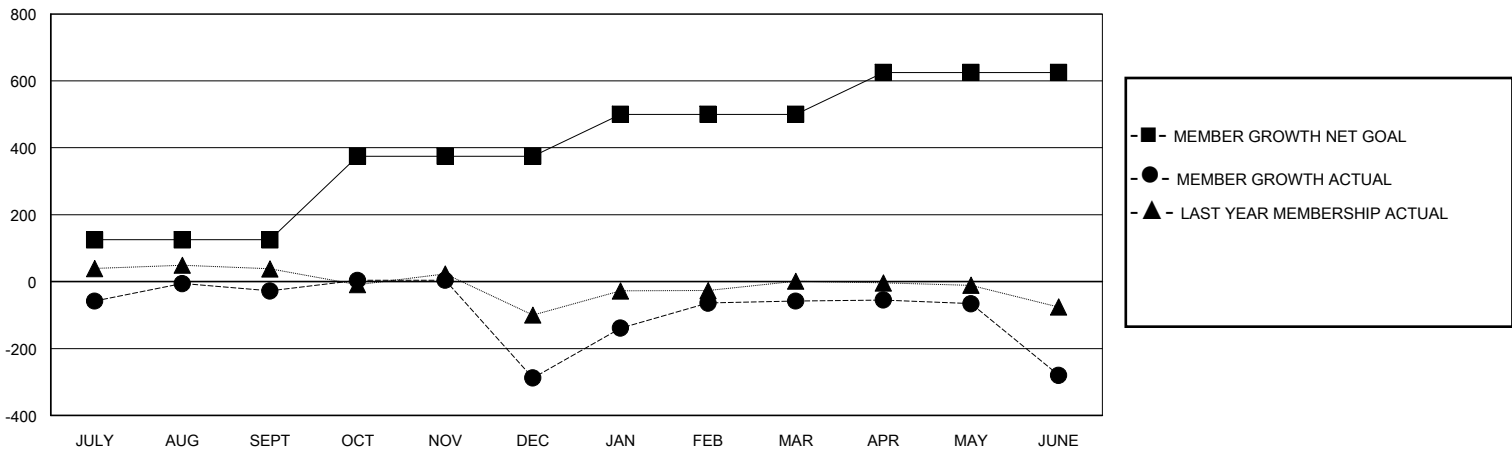
Clubs			
RESULTS FOR 2019-2020			
QUARTER	NEW CLUB GOAL	NEW CLUBS	DROPPED CLUBS
JULY/AUG/SEPT	3	0	2
OCT/NOV/DEC	3	1	6
JAN/FEB/MAR	3	0	0
APR/MAY/JUNE	3	2	0

Members			
RESULTS FOR 2019-2020			
QUARTER	MEMBER GROWTH NET GOAL	MEMBER GROWTH ACTUAL	DROPPED MEMBERS ACTUAL (including transfers)
JULY/AUG/SEPT	125	188	195
OCT/NOV/DEC	250	80	336
JAN/FEB/MAR	125	329	56
APR/MAY/JUNE	125	202	404

GOALS AND ACTUAL NEW CLUBS CUMULATIVE



GOALS AND ACTUAL MEMBERS CUMULATIVE



DROPPED CLUBS: 8 DROPPED MEMBERS DECEASED 19 CLUB CANCELLED 175 OTHER 797 TOTAL 991	112 CLUBS OF 146 ADDED 1 OR MORE NEW MEMBERS	GENDER DISTRIBUTION MALE 4,366 (78.22%) FEMALE 1,216 (21.78%)
	CLICK HERE FOR CUMULATIVE MEMBERSHIP DATA	TOTAL FAMILY UNIT MEMBERS 2,171 FAMILY MEMBERS PAYING HALF DUES 1,132